

KLD-1982A

Industrial Panel PC



Features

- **Embedded Intel 6th 7th Celeron/Core i3 i5 i7 Processor**
- **19inch LED Panel with capacitive touchscreen**
- **System memory up to 16GB DDR4**
- **2xHDMI Dual Display**
- **Fanless design and low power consumption**
- **Front Panel IP65 Level**
- **Supports Win 7/ Win 8/ Win 10/ Linux OS**

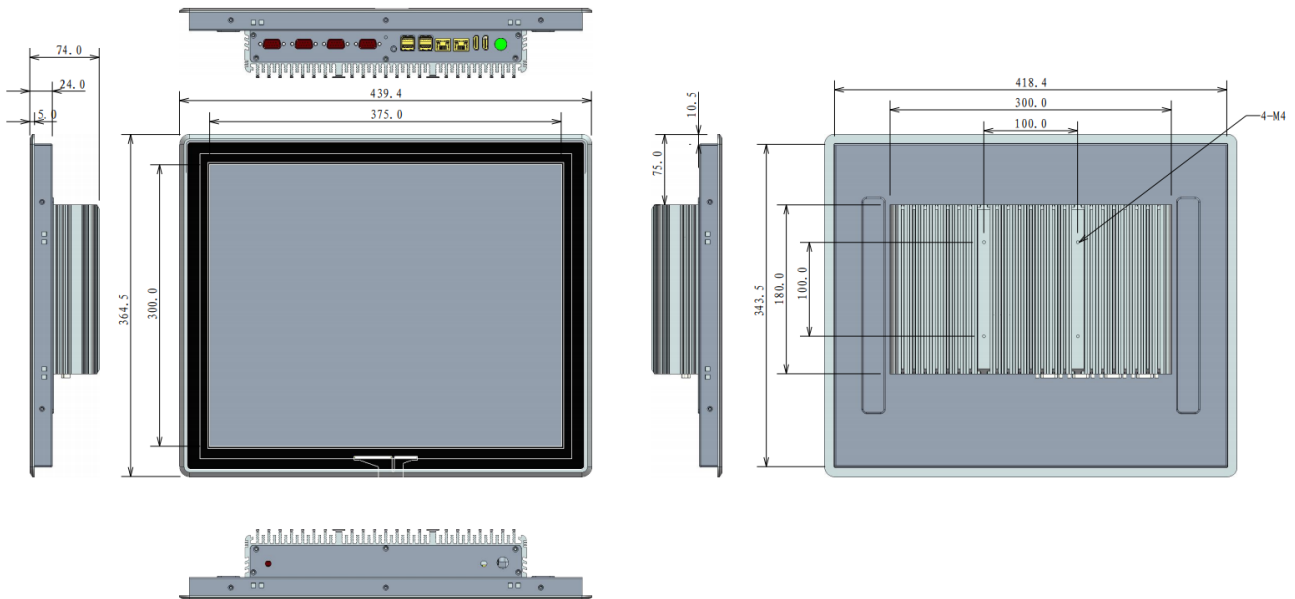
Specifications

Processor	CPU	Intel® i3-7100U Dual Core up to 2.40 GHz 3M Cache, TDP 15W Intel® i5-7200U Dual Core up to 3.10 GHz 3M Cache, TDP 15W Intel® i7-7500U Dual Core up to 3.50 GHz 4M Cache, TDP 15W
	Cooling System	Fanless
	Memory	Onboard 4GB-16GB DDR4
	Storage	mSATA SSD+2.5' ' HDD
	I/O ports	USB: 4xUSB3.0
		COM: 4xRS232, optional 6xRS232
		Dual Display: 2xHDMI
Audio: 1xLine-out		
Network(LAN)	Expansion: MINI-PCIE 2x 10/100/1000Mbps Ethernet	
Input Voltage	Input Voltage	12V DC(Aviation Connector) , optional 9V-36V DC
LCD Display	Display Type:	19inch TFT LED Panel(LED Backlight)
	Max. Resolution:	1280x1024 / 4:3
	Luminance(cd/m ²)	300-1000nits
Touchscreen	Touch Type	Capacitive Touch
OS Support	OS Support	Microsoft Windows 7/ Windows 8/ Windows 10/ Linux
Environment	Operating Temperature	-10°C ~ 60°C(14~ 140 °F)(extend temperature optional)
	Storage Temperature	-20°C ~ 70°C(-4 ~ 158 °F)
	Front Panel Protection	IP65 compliant
Mechanical	Dimensions	439.4x364.5x74mm cutout size: 418.4x343.5mm

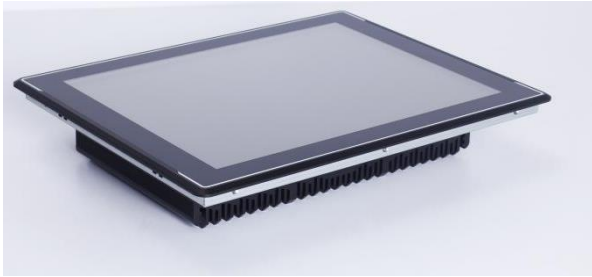
	Weight	8.3KG
	Color	Black
	Material	Aluminum + SUS
Custom Service	Custom Service	Custom BIOS, System Encryption, Custom LOGO

Dimensions

Unit: mm



Pictures



Packing List	Ordering Information
1x KLD-1982A	KLD-1982A: Projected Capacitive Touch Version
1x Driver CD	
1x Power Adapter	Operating Systems
Optional accessories	WIN7 32bit 64bit ENG/CN
VESA Bracket	WIN8 32bit 64bit ENG/CN
Power Cable 2-pin 200cm	WIN10 32bit 64bit ENG/CN